

Basal Atco Formation (early Coniacian, 89mya)
North Central Texas
Hybodus and *Ptychodus*

Meristodonoides
(*Hybodus*)



Ptychodus atcoensis



Ptychodus atcoensis
lateral file teeth



Ptychodus mortoni
apical and lateral views



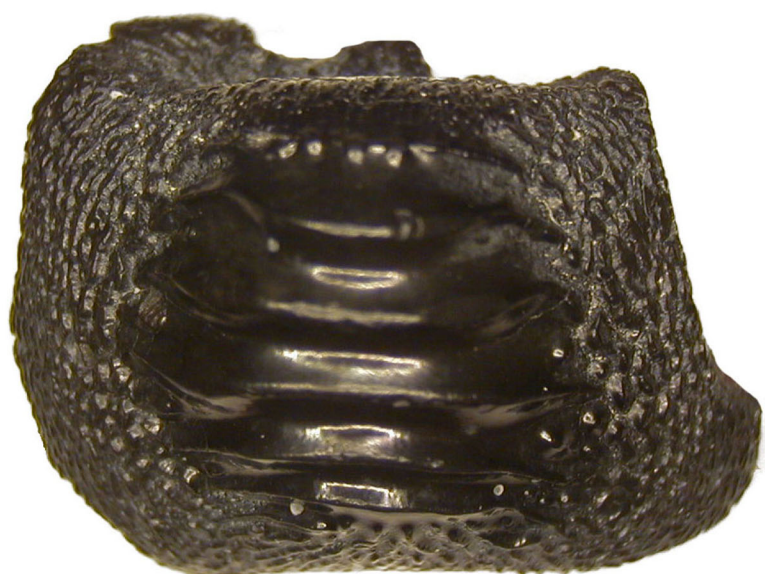
Ptychodus whipplei
apical view



Ptychodus whipplei
posterior view



Ptychodus latissimus



Ptychodus mammilaris



Ptychodus martini



Basal Atco Formation (early Coniacian, 89 mya)

Lamniformes

Cretoxyrhina mantelli
(Great white shark)



Cretodus crassidens
(Great white shark)



Protolamna compressidens



Johnlongia parvidens
(Sand tiger)



Squalicorax falcatus



Peudocorax laevis



Microcorax crassus



Cretalamna appendiculata
(Mackeral shark)



Dallasiella willistoni
anterior teeth



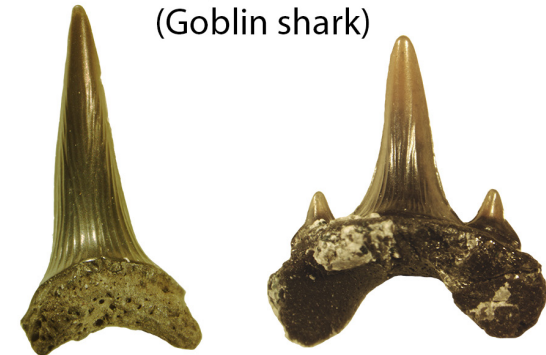
Dallasiella
(posterior teeth)



Paraisurus compressus



Scapanorhynchus raphiodon
(Goblin shark)



Original image by Shawn A. Hamm

Basal Atco Formation (early Coniacian 89 mya)
Micro teeth < 5mm

Sclerorhynchus
Sawshark



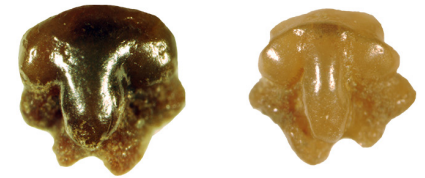
Ischyrhiza schneideri
Saw shark



Heterodontus
Horn shark



Rhinobatis lobatus
Guitar ish



Ischyrhiza schneideri
oral teeth



Keistus texanus



Cantioscyllium decipiens
Nurse shark



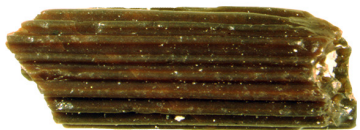
Dermal denticle
shark skin



Ptychotrygon triangularis
Saw shark



Cylindracanthus
shark spine



Pseudohypolophus sp.
skate



Chiloscyllium greeni
Carpet shark

